

MD18/MD24/MD35 CRAWLER DOZER

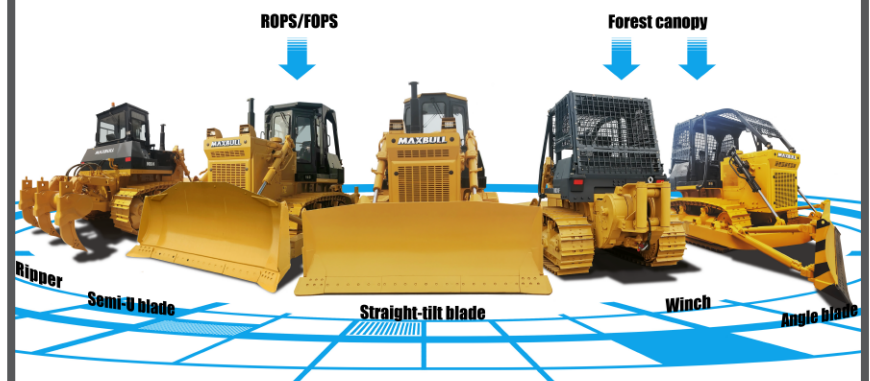
Service leads users, Quality drives the future



MAXBULL

- **Branded Powerful Engine.**
- **Highly Reliable Power Shift Transmission.**
- **Main Frame with Full Box Structure, with high impact load bearing capacity and resistance to bending and twisting.**
- **Semi-rigid Suspension Travel System, increase the ground area of tracks.**
- **Standard Straight-tilt Blade with Powerful Cutting Force.**
- **Cabin with Ergonomic Design, makes the operation process more light and flexible.**

What is a Maxbull Dozer used for?



| MAIN SPECIFICATIONS | | | MD18 | | | MD24 | | | MD35 | | |
|----------------------|---------------------------------|------------------|--|-----------------------------|--------|------------------------|-------|--------|------------------------|-------|--------|
| OVERALL | Dimension | mm | 5140 x3388 x 3032 | | | 5460 x 3725 x 3395 | | | 6880 x 4130 x 3725 | | |
| | Operating Weight | kg | 17000 | | | 23500 | | | 37200 | | |
| ENGINE | Engine Model | | Weichai WD10G178E25 | | | Cummins NT855-C280S10 | | | Cummins NTA855-C360S10 | | |
| | Rated Power | | 131kW(178hp) @ 1850rpm | | | 175kW(238hp) @ 1800rpm | | | 257kW(345hp) @ 2000rpm | | |
| | Max. Torque | | 765N·m @ 1300rpm | | | 1030N·m @ 1300rpm | | | 1440N·m @ 1400rpm | | |
| | No. of Cylinders | | 6 | | | 6 | | | 6 | | |
| | Displacement | L | 9.726 | | | 14.01 | | | 14.01 | | |
| | TRANSMISSION SYSTEM | Torque Converter | | 3-element, 1 stage, 1 phase | | | | | | | |
| Gearbox | | | Planetary gear type, power shift, forced lubrication | | | | | | | | |
| Central Drive Shaft | | | Spiral bevel gear, single-stage speed reduction, splash lubrication | | | | | | | | |
| Steering Clutch | | | Wet, multi-disc, spring loaded, hydraulically separated, hydraulic control | | | | | | | | |
| Steering Brake | | | Wet type, floating band structure, foot brake with hydraulic booster | | | | | | | | |
| Final Drive | | | 2-stage speed reduction of spur gear, splash lubrication | | | | | | | | |
| TRAVEL SPEED | Gear | | 3F/3R | | | 3F/3R | | | 3F/3R | | |
| | Forward | km/h | 3.3 / 5.9 / 9.7 | | | 3.6 / 6.5 / 11.2 | | | 3.6 / 6.6 / 11.5 | | |
| | Reverse | km/h | 4.3 / 7.6 / 12.6 | | | 4.3 / 7.7 / 13.2 | | | 4.4 / 7.8 / 13.5 | | |
| UNDERCARRIAGE SYSTEM | Type | | Sprayed beam, suspended structure of equalizer | | | | | | | | |
| | No. of Carrier Roller | | 2 each side | | | 2 each side | | | 2 each side | | |
| | No. of Track Shoe | | 37 each side | | | 38 each side | | | 41 each side | | |
| | Track Shoe Type | | Single grouser | | | Single grouser | | | Single grouser | | |
| | Width of Track Shoe | mm | 510 | | | 560 | | | 560 | | |
| | Pitch | mm | 203.2 | | | 216 | | | 228.6 | | |
| | Track Gauge | mm | 1880 | | | 2000 | | | 2140 | | |
| | Ground Pressure | Bar | 0.67 | | | 0.77 | | | 1.05 | | |
| HYDRAULIC SYSTEM | Max. Working Pressure | Bar | 140 | | | 140 | | | 140 | | |
| | Rate of Flow | L/min | 243 | | | 262 | | | 355 | | |
| | Pump Type | | Gear pump | | | Gear pump | | | Gear pump | | |
| BLADE | Blade Type | | Straight-tilt | Angle | Semi-U | Straight-tilt | Angle | Semi-U | Straight-tilt | Angle | Semi-U |
| | Blade Capacity | m ³ | 4.5 | 4.3 | 5.0 | 6.4 | 4.7 | 7.5 | 10.0 | 6.0 | 11.9 |
| | Blade Width | mm | 3388 | 3970 | 3556 | 3725 | 4365 | 3725 | 4130 | 5000 | 4130 |
| | Blade Height | mm | 1150 | 1040 | 1120 | 1315 | 1055 | 1374 | 1590 | 1140 | 1710 |
| | Max. Drop Below Ground | mm | 540 | 540 | 530 | 538 | 535 | 540 | 560 | 630 | 560 |
| | Max. Tilt Adjustment | mm | 400 | - | 400 | 735 | 500 | 755 | 1000 | 500 | 1000 |
| 3-SHANK RIPPER | Max. Digging Depth | mm | 572 | | | 666 | | | 842 | | |
| | Max. Lift Above- ground | mm | 592 | | | 555 | | | 883 | | |
| | Weight | kg | 1667 | | | 2495 | | | 3802 | | |
| SINGLE-SHANK RIPPER | Max. Digging Depth | mm | - | | | 695 | | | 1250 | | |
| | Max. Lift Above- ground | mm | - | | | 515 | | | 965 | | |
| | Weight | mm | - | | | 2453 | | | 3252 | | |
| WINCH ASS'Y | Traction Power @ full tension | kN | - | | | 200 | | | - | | |
| | Traction Speed @ full extension | m/s | - | | | 0.265 | | | - | | |
| | Wire Rope | mm | - | | | Φ28×70000 | | | - | | |
| | Hydraulic Pressure | Bar | - | | | 15 | | | - | | |

Options: AC, angle blade, Semi-U blade, 3-shank ripper, single-shank ripper, winch ass'y, Rops/Fops structure, forest canopy, backup camera.



Anhui Maxbull Machinery Technology Co., Ltd.
 ADD: No. 199 Jinxiu Street, Shushan District, Hefei, Anhui, China.
 TEL: 0086 551 63852627
 Email: info@maxbull.cn
 WEB: www.ahmaxbull.com

Authorized dealer:

